

TopPage>>Search Result>>7240B

Angular Contact Ball Bearings

Bearing No. : **NACHI 7240B**

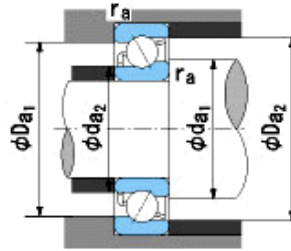
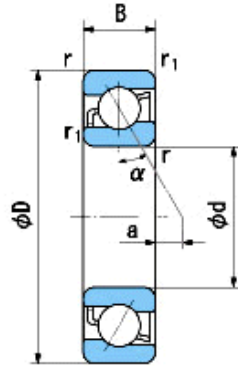
■ Bearing Type

■ Clearance

■ Tolerance Class

Dimensions

d = 200⁰_{-0.030}
 D = 360⁰_{-0.040}
 B = 58⁰_{-0.300}
 r = 4~6.5
 (Radial Direction)
 r = 4~9
 (Axial Direction)
 r1 = 1.5~3
 (Radial Direction)
 r1 = 1.5~5
 (Axial Direction)
 a = 88.5



Dimensions

da1(min) = 218
 da2(min) = 209
 Da1(max) = 342
 Da2(max) = 351
 ra(max) = 3
 ra1(max) = 1.5
 Mass = 25.5 kg

Basic Dynamic Load Rating Cr :	315,000 N
Basic Static Load Rating Cor :	420,000 N
Limiting Speed ;	
Grease Lubrication :	1,300 min ⁻¹
Oil Lubrication :	1,900 min ⁻¹

	INNER RING	OUTER RING
O.D.Surface Runout with Side :		-
Axial Runout with Bore :	-	
Axial Runout with Raceway :	-	
Width Variation :	0.030	0.030
Radial Runout :	0.040	0.070